



J A C C C

JAPANESE AMERICAN CULTURAL & COMMUNITY CENTER

ANNUAL REPORT 2016-2017





A MESSAGE FROM THE PRESIDENT

The 2016–2017 Fiscal Year marked a year of planning with confidence and intentionality. JACCC was fortunate to have been granted support from the DeVos Institute of Arts Management at the University of Maryland allowing us to work for eight months with Brett Egan, one of the nation's top leaders in strategic planning. JACCC leadership, which included both board and staff, created a plan to span through 2022, mapping out our future and allowing for course-corrections as needed.

This Fiscal Year also marks the fourth consecutive year that JACCC has maintained a positive operating budget. This is due to the commitment of our donors and supporters who have helped us stabilize our operations and continue to make a significant impact on the experiences of every artist, audience member, and participant, young and young at heart who visits and enjoys the programs at JACCC.

As I head toward my fifth year of leading this institution, I am thankful every day for the hard work and dedication of our staff and board members. Their efforts have helped us get to a place where we are able to plan strategically and confidently, and bring our audiences a multitude of programming ranging from traditional to contemporary: Edo period art of the Price Collection, master artists like Nomura Mansaku, the Comedy Comedy Fest, and Ukuleles for Little Tokyo. It has truly been an exciting and full year.



Sincerely,

Leslie A. Ito
President & CEO

JACCC MISSION

A hub for Japanese and Japanese American arts and culture and a community gathering place for the diverse voices it inspires—Japanese American Cultural & Community Center connects traditional and contemporary; community participants and creative professionals; Southern California and the world beyond.

JACCC ties people and communities together through place, programs, performances, arts & culture.

In FY 2016–2017,
JACCC hosted
189 DAYS of
FREE
programs.



Hirokazu Kosaka and the JACCC staff did a fabulous job curating and displaying my photographic exhibition, *A REVERENCE FOR BEAUTY*, in the Doizaki Gallery. I have been fortunate to have exhibitions of my photographs around the world and no one has been easier and more professional to work with than Hirokazu. And the reconfigured and lighted space in the gallery is certainly first rate.

*-Gil Garcetti, Photographer
UNESCO - IHE Cultural Ambassador*





In FY 2016–2017, the
Aratani Theatre was in use for
236 days of
performance.

In addition, the JACCC Plaza,
George J. Doizaki Gallery, James
Irvine Japanese Garden, National
Japanese American Veterans
Memorial Court, Garden Room,
and Tea Room hosted

2,625
programs, exhibitions,
and special events.

Meanwhile, JACCC's Center
Building was home to

22 community and
non-profit
organizations.

The stature and magic of our 2016
The Comedy Comedy Festival: A Comedy
Festival could not have been achieved without
the generous support, resources and campus
of JACCC. Creating a high-quality production
in the heart of Little Tokyo was so meaningful
to advance our mission of presenting Asian
American and other diverse voices not
typically seen on mainstream comedy stages.

*-Jenny Yang, Disoriented Comedy
The Comedy Comedy Festival Producer*





ウクレレを始めてから生活自体がなんだか楽しくなって、時期尚早の感がありますが、元気が出てきました。楽器や音楽にもっと具体的に興味を持つようになりました。色々皆さんとお話出来るのも楽しみです、勉強になります。頂いたウクレレは私の宝物です。

-Cathy H. Kajiya, Ukuleles for Little Tokyo participant

Sustainable Little Tokyo is a vital initiative that strengthens the Little Tokyo community through cultural, economic, and sustainable strategies.

SLT is a valuable space that fights for the self-determination of the neighborhood while creating opportunities for community-building. I feel fortunate to work alongside such an incredible group of committed members of SLT and continue to work towards the equitable growth of Little Tokyo.

-Theresa Hwang, SLT 2020 Consultant

In FY 2016–2017,
JACCC and
Sustainable Little Tokyo
programs welcomed

1,040
artists and
community
partners.





JACCC offered a wonderful year of Japanese and Japanese American cultural arts enrichment including performances at the Aratani Theatre, flower arrangement and tea ceremony in the Doizaki Gallery, family and community programs in the JACCC Plaza, and new culinary arts workshops. We are pleased to be able to participate as volunteers and we ourselves were enriched for helping to offer these events to our Los Angeles community.

-Lynette Takemoto, JACCC Volunteer

JACCC is grateful to have a passionate and dedicated volunteer base.

In FY 2016–2017,
233 VOLUNTEERS
donated
2,050
HOURS OF SERVICE
over 67 days
of programming.



2016–2017 FINANCIALS

During fiscal year 2016–17, JACCC continued to expand programming in performing arts, cultural arts, and community engagement providing a vibrant cultural resource for the Little Tokyo and Southern California community and beyond.

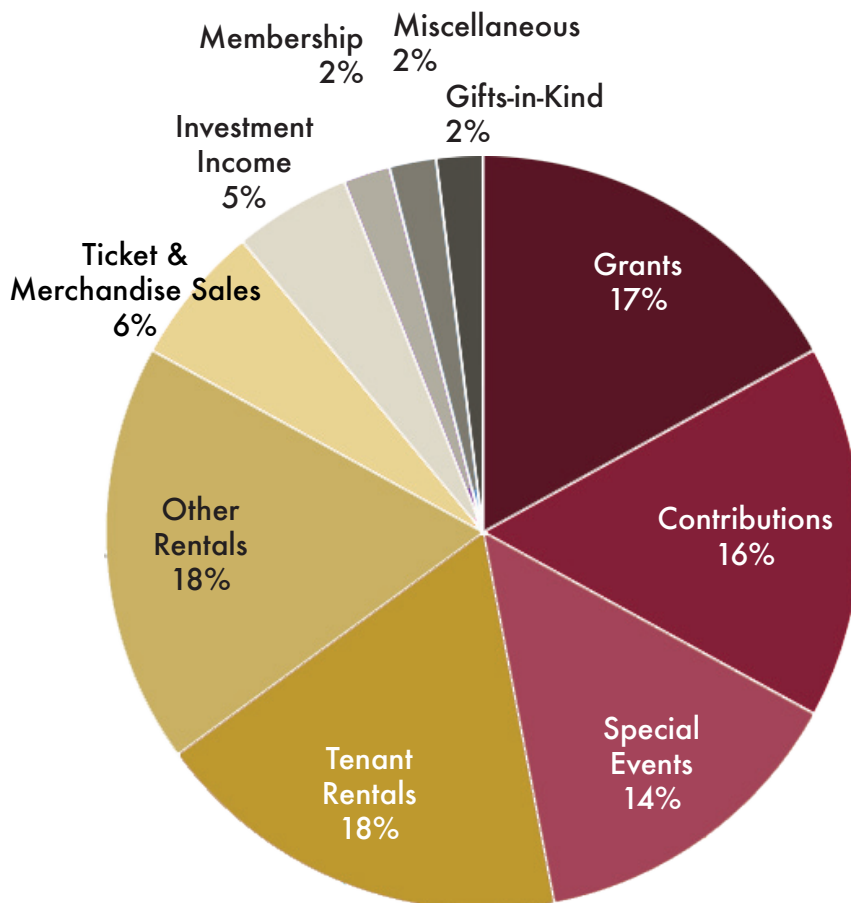
JACCC ended the fiscal year with a surplus of \$147,322. Contributed revenue increased \$234K overall, including \$460K in capital gifts for the proposed Culinary Cultural Center and Theatre upgrades. Rentals increased \$101K with full occupancy in the Center Building and increased use in the Theatre and Plaza. Other income increased \$9K, including ticket revenue, workshops, and distributions from the parking garage.

Overall operating expenses increased \$94K, a 3% increase from the prior year. Increases were primarily due to artistic and production costs for programming. Overhead costs and personnel remained consistent with the prior year.

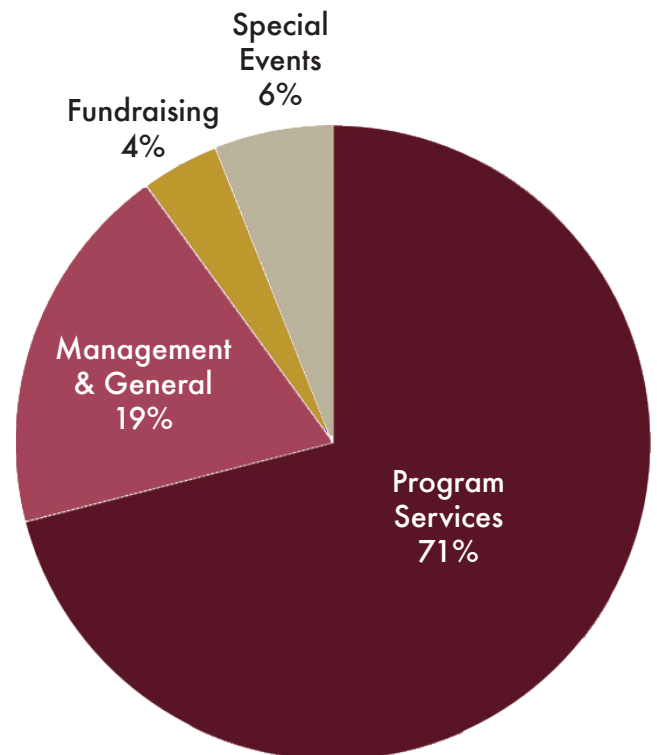
Capital investments to the Theater boiler and lighting upgrades were made and will continue in preparation for Allegiance at the Aratani Theatre. JACCC continues to move forward with exciting new programs while continuing to achieve stability for the present and long-term.

The financial results depicted in our Annual Report were derived from the JACCC audited June 30, 2017, consolidated financial statements, which contained an unqualified audit opinion. JACCC's complete audited financial statements can be obtained upon request at (213) 628-2725.

REVENUE SUMMARY



EXPENSE SUMMARY



2016–2017 FINANCIALS

For the fiscal year ending on June 30, 2017 and 2016 (in thousands)

	<u>2017</u>	<u>2016</u>
Support and Revenue		
Grant Revenue	550	775
Contributions, Dues & Special Events	1,066	846
Rentals	1,204	1,103
Gifts in Kind	79	24
Miscellaneous Income (1)	275	266
Investment Income	148	74
Total Support and Revenue	3,322	3,088
Functional Expenses		
Program Services	2,251	2,182
Management and General	613	595
Fundraising	138	134
Special Events	172	170
Total Functional Expenses	3,174	3,080
Net Results: Support and Revenue over Functional Expenses	147	8
Asset, Liability & Net Asset Summary		
Cash & Cash Equivalents	1,131	707
Investments	1,593	1,425
Grants Receivable	379	493
Accounts Receivable	60	62
Prepaid Expenses	36	10
Property & Equipment (net of depreciation)	5,872	6,133
Art Collections	222	222
Other Assets	37	35
Total Asset	9,330	9,088
Accounts Payable and Accrued Expenses	210	134
Loans Payable	1,817	1,881
Deferred Revenue	78	51
Other Liabilities	73	17
Total Net Assets	7,152	7,005
Total Liabilities and Net Assets	9,330	9,088

ありがとうございました

THANK YOU TO OUR 2016-2017 SPONSORS & SUPPORTERS

\$100,000 and above

Aratani Foundation
Bloomberg Philanthropies
Durfee Foundation
Ken & Jo Ann Hamamura
Henry Ota, in memory of
Harry & Sue Ota
Sega Sammy Holdings Inc.
Suntory Holdings Ltd.
Surdna Foundation
Akira Uehara

\$50,000 to \$99,999

Los Angeles County Arts Commission

\$15,000 to \$49,999

City of Los Angeles, Department of
Cultural Affairs
Folick Family
Kajima International Inc.
Keiro
Mazda North American Operations
Joachim Splichal
The Henri & Tomoye Takahashi
Charitable Foundation
Toyota Motor Sales U.S.A., Inc.

\$5,000 to \$14,999

Edison International
EGK Foundation
Hitachi Ltd.
Kensuke Hotta
Barbara Ito
J. Paul Getty Trust
Japan Business Association of
Southern California
Kawaguchi-Kihara Memorial
Foundation
Mikuni American Corporation
MUFG Union Bank, N.A.
Pasadena Art Alliance
Pasona N.A., Inc.
Pillsbury Winthrop LLP
Riviera Holdings Limited

\$2,500 to \$4,999

Day-Lee Foods, Inc.
Gerald Fukui
The Heads Up Youth Foundation
Horiba International
Glenn & Michiko Inanaga
The James Irvine Foundation
Aiko Kawaratani
Tim & Marion Manaka
Manufacturers Bank
MinebeaMitsumi Inc.
Naritoku Charitable Foundation
Robert Crowder Foundation
Yoshihiro Sano
Sumitomo Mitsui Banking Corporation
Susan Tamaki
Wakunaga of America Co., Ltd.

\$1,000 to \$2,499

AARP Sacramento
Calvin Abe
Dr. Akiko Agishi
Douglas Aihara
Aioi Nissay Dowa Insurance
Linda Aratani
Asian American Journalists Association
Asian Heritage Jazz Festival
Bank of the West
CBS Diversity
Kazuko Doizaki
Frank Ellsworth
Ernst & Young
FIA Insurance Services Inc.
Fujita & Associates CPA
Terry Hara
Leslie Furukawa & John Hayashi
Frank & Betty Hiji
Bette Hiramatsu
Ruby Hori
Julia Huang
Thomas Iino
Ishigami, Ishigami, & Ochi LLP
Japanese American Korean War Veterans
KSA America, Inc.
Carol Kawata
Nikki Kodama & Family
Kondo Shuzo Co.
Richard McDanel

continued on next page

ありがとうございました

THANK YOU TO OUR 2016-2017 SPONSORS & SUPPORTERS

\$1,000 to \$2,499 (continued)

Nancy Matsui
Nippon Life Insurance Company
of America
Alan Nishio
Yukinori Nishio
Office Sekkei America, Inc.
Hon. Ronald & Fujie Ohata
Dr. Keiichiro Omori
Pacific Commerce Bank
Prolink Accounting Services, Inc.
Rafu Shimpo Foundation
Sandra Sakamoto & Nolan
Maehara
San Fernando Valley Japanese
American Community Center
So-Phis of Orange County
George & Brad Takei
Randall & Mari Tamura
Yasumasa Tanano
Tokio Marine America
Tokyu Land US Corporation
UCLA Terasaki Center for
Japanese Studies
Janice Yamada
CF Wong
Yaegaki Sake & Spirits Inc.
Yamasaki Insurance Agency
Reo & Reiko Yoshitani

\$500 to \$999

Yaeko Aihara
Wendy Aihara Oshita
All Nippon Airways Company Ltd.
Karen Arita
Lynn Arthurs
Bank of America United Way
Susan Chang
Iheanyi D. Clemons
First Republic Bank
Ernie Fukumoto
Harry & Joyce Furuya
Lori Gage
Steve & Janine Hunt
Tsutomu Ige
Inabata America Corporation
Chris Inouye
Noriaki & Janet Ito
Tomio Ito

\$500 to \$999 (continued)

Shoye Iwo
Tadahide & Rosa Kawahira
Toshiyuki Kihara
Manuel & Willette Klausner
Kobayashi & Company
Law Offices of Torres & Brenner
Mark Kosakura
Kevin Kroeker
Frances Kuramoto
Jean Miao
Mizuho Bank, Ltd.
Jane Murakami
Victor Muraoka
Ben Nagano
Chidori Nakamura
Nikkei Credit Union
June Okawa
David Ono
Candace Ota-Geary
Joseph C. Portillo
Paula Rao
Eric & Lillian Saito
Dick & Arleen Sakahara
Chris Segawa
Sachiko & William Seki
Thomas Shea
Wayne & Pauline Shimizu
Lillian & Wilson Soohoo
Max Stolz
Diane Suzuki
Miyako Kurata Tachibana
Norito R. Takamoto
Chris Timoteo
Toridoll Dining California LLC
Timothy Toyama
Ann Tsugawa
Bruce Unoura
Norio Uyematsu
Ben Vivari
Kenneth Watase
Ann Webster
Victor Wong
Mary Yamabe
David & Helen Yamahata

Significant In-Kind Donations

American Honda Motor Co., Inc.
American Airlines
Bose Professional
Canon U.S.A., Inc.
Epson America, Inc.
Hiji Bros.
Kawaguchi-Kihara Memorial
Foundation
POPDUP
Sun Noodle
Three Weavers Brewing Company
Ushio America, Inc.

In Honor of:

Marion Manaka

In Memory of:

Ronald Doizaki
Philip N. Ito
Marion Matoba
John J. Miyauchi
Katherine Mooko
Hatsuko Mukai
Don T. Nakanishi
Tsuyoko Sue Ota

We are deeply grateful to all donors.

We regret due to limited space we cannot list everyone. If your name has been displayed incorrectly, or inadvertently excluded, please accept our deepest apologies.

ありがとうございました

THANK YOU TO OUR

2017 ANNIVERSARY CELEBRATION SPONSORS & SUPPORTERS

Presenting Sponsor

Terasaki Family Foundation

Major Sponsors

American Airlines

Folick Family

Gold Sponsors

Aratani Foundation

Kawaguchi-Kihara Memorial Foundation

MUFG Union Bank N.A.

George, Ruri, Nathan & Lisa Sugimoto

Suntory Holdings Ltd.

Silver Sponsors

American Honda Motor Co., Inc.

Doizaki and Sons

Fukui Mortuary

Glenn & Michiko Inanaga

Gonsaku & Mine Ito Families

Mitsubishi Corporation (Americas)

Henry Ota & Hiroyo Nonoyama

Pacific Commerce Bank/Thomas Iino

Bronze Sponsors

FIA Insurance Services Inc.

Friends of Kanji Sahara

IW Group

Ito/Wong Family

JAPAN HOUSE Los Angeles

Japanese Restaurant Association of America

Kanji Sahara Family

Kinecta Federal Credit Union

Nobuyuki Family

Ronald & Fujie Ohata

Panda Restaurant Group, Inc.

SoCalGas

Gold Patrons

California Community Foundation

Metro

Alan & Yvonne Nishio

Sandy Sakamoto & Nolan Maehara

Community Sponsors

East West Players

Friends of Ev

Gift of Compassion

Greater L.A. Chapter of JACL

Higashi Honganji Buddhist Temple

Iwasaki Family

Japanese American Korean War Veterans

Japanese American National Museum

KEIRO

Little Tokyo Service Center

Nisei Week Foundation & NCRR

OCBC Adult Buddhist Association

OCBC Project Kokoro

Orange County Buddhist Church

Pacific Asian Consortium in Employment

Rafu Shimpō

Rotary Club of Irvine

So-Phis

Tomodachi Bento Project

Tuna Canyon Detention Station Coalition

Urasenke Tankokai LA

Event Sake Sponsor

Mutual Trading Co., Inc.

Takara Sake USA

Significant in-kind support provided by

American Airlines

Beam Suntory

Additional donations \$500 and above

Deloitte & Touche LLP

Matt Gruver, Jack Clancy Associates

Ken & Jo Ann Hamamura

Brian Ikeda

Nikki Kodama & Family

Brian Lee

John Lee

Lynn Akemi Miyamoto

Johnny & Wendy Mori

Mutual Trading Co., Inc.

Jeffrey Neu

Gilbert & Penny Nishimura

Tony Nobuyuki

Daniel & Yumiko Okazaki

Dr. & Mrs. Gordon H. Sasaki

Andrew Shimazaki

Lisa Sugimoto

Sushi-Gen

Craig & Miwako Takiguchi

George Tanaka

Gordon & Joan Tani

Yuko Uyesugi

Michael & Ellie Watanabe

David & Helen Yamahata

Officers

George Tanaka, Union Bank
Chair of the Board of Directors
Nancy Matsui, American Airlines
Vice-Chair, External
Glenn Inanaga, Cherng Family Trust
Vice-Chair, Internal
Tony Nobuyuki, Fairway Real Estate
Treasurer
Gerald Fukui, Fukui Mortuary, Inc.
Secretary
Henry Ota, Esq.
Immediate Past Chair

Members

Jeff Folick, Bravo Health (retired)
Toshio Terry Handa, Japanese Chamber of
 Commerce of Southern California
Bette Hiramatsu, Hiramatsu and Associates
Thomas Iino, Pacific Commerce Bank
Gary Kawaguchi, Upper Crust Enterprises
Nikki Kodama, Northrop Grumman Corporation
Tim Manaka, Jr., FIA Insurance Services, Inc.
Jean Miao, JTM Global Philanthropy Advisors
Daren Mooko, Pomona College, Claremont
Johnny Mori, Kinnara Taiko/Gagaku
Alan Nishio, California State University, Long
 Beach (retired)
Dolly Oishi, Japan Airlines
Jan Perry, City of Los Angeles
Sandra Sakamoto, Esq., LimNexus LLP
Diane Tanaka Suzuki, HealthCare Partners
Craig Tomiyoshi, IW Group Inc.
David Yamahata, Los Angeles Fire Department
 (retired)

Leslie A. Ito
President & CEO

Administration

Michelle Moreno
Director of Administration & Operations
Helen H. Ota
Director of Development & Marketing
Eiko Fujino
Receptionist
Terry Hashimoto
Box Office & Membership Coordinator
Kisa Ito
Marketing & Development Manager
Marlene Lee
Office Manager

Programs

Alison De La Cruz
*Director of Performing Arts & Community
 Engagement*
Hirokazu Kosaka
Master Artist in Residence
Chester Ikei
Senior Advisor
Wakana Kimura
Cultural Arts Manager
Kent Marume
Community Engagement Coordinator
Carol Onaga
General Manager, Aratani Theatre
Scott Oshima
Lead Community Organizer

Operations

Arthur Granados
Chief Engineer
Javier Ixta
Arturo Carballo
Pedro Gutierrez
Aric Nakamoto
Maria Magdalena Rodriguez
Francisco Soc Sut
Operations Assistants