



## ANNUAL REPORT 2015 - 2016



## A MESSAGE FROM THE PRESIDENT

The 2015-2016 Fiscal Year represented a year of incremental growth, attention to long-time deferred maintenance and a chance to dream for the future. For the third consecutive year, we have a positive operating budget while increasing and fine-tuning our arts and cultural offerings to the community. We were able to tend to some maintenance issues like replacing the Aratani Theatre roof before El Niño approached, and we increased our staff capacity by adding two critical positions. With a little more stability on the horizon, we were also able to begin dreaming about ways to engage new audiences through new programs, such as the culinary arts.

Our accomplishments would not be possible without the support from our longtime donors and new partners who have joined us in cultivating JACCC as a vibrant place for current and future generations to learn about, feel, and create community around Japanese and Japanese American arts and culture. My special heartfelt gratitude to JACCC's dedicated staff and Board of Directors whose passion and commitment to our work has helped make all of it possible.

We are pleased with the results of the 2015-2016 Fiscal Year and look forward to continued progress in the new year.



Sincerely,



Leslie A. Ito  
President & CEO

## JACCC MISSION

To present, perpetuate, transmit, and promote Japanese and Japanese American arts and culture to diverse audiences, and to provide a center to enhance community programs.





# つながり CONNECT



JACCC ties people and communities together through place, programs, performances, arts & culture.

In FY 2015-2016,  
JACCC hosted  
**148 DAYS** of  
**FREE**  
programs.



I feel very lucky to live in Little Tokyo and have the Japanese American Cultural & Community Center (JACCC) and the Aratani Theater as neighbors. The JACCC brings such diverse, interesting and invigorating shows and activities. For me, living here in DTLA on a limited income, can be discouraging and challenging, trying to attend cultural activities around town. But the JACCC folks have always welcomed me and found me a seat, even, when I couldn't pay! As a senior, I know, its hard enough for seniors to get out and about. I am really thrilled that the JACCC can afford to open its doors to everyone. I hope they can continue to operate as a cultural community institution and never turn poor people away from events. **The JACCC is truly a beautiful flower in the landscape of Los Angeles.**

- Jeff Chop, Little Tokyo resident

「今年のはじめに文化会館にていけばな教授歴25周年記念 いけばな展を催すことが出来ました。すべての条件がそろった会場構成とロサンゼルスセントラルロケーションという立地条件も便利でこの上も無い恵まれた環境で開催出来ましたことに感謝しております。スタッフの方達も真剣に会場構成を考えて下さり色々な問題点も解決して協力していただきお陰様で展示会も成功することが出来ました。このような施設がロサンゼルスLittle Tokyoにあることは本当に光栄であり我々があります、これからも大切にコミュニティの一員として守って行きたいと思ひます。」

-武市(玉春)治子 草月流師範会理事





# 養う CULTIVATE

In FY 2015-2016,  
JACCC programs welcomed  
**246** **artists and community partners.**

JACCC's Center Building  
was home to  
**22** **community and non-profit organizations.**

In addition, the  
George J. Doizaki Gallery,  
James Irvine Japanese Garden,  
National Japanese American  
Veterans Memorial Court,  
and Tea Room hosted

**2,147**  
**programs, exhibitions,**  
and **special events.**

Meanwhile, the  
Aratani Theatre was in use for  
**167** **days of performance.**

"It was a dream come true to bring the original new musical, "Peace On Your Wings" to Los Angeles for its West Coast premiere, and we couldn't have done it without the incredible partnership of the Japanese American Cultural & Community Center. The experience both preparing for and being in the theater went smoothly due to the organization of the JACCC's team, and the meticulous attention to detail which was crucial to producing the show away from our home theater. **The warmth and hospitality from the board and staff of the JACCC, as well as the lovely, well equipped Aratani Theatre, all contributed to making the cast, crew, and accompanying traveling party feel very much at home.**

*-Jenny Taira, Ohana Arts Executive Director & Laurie Rubin, Ohana Arts Co-Artistic Director*





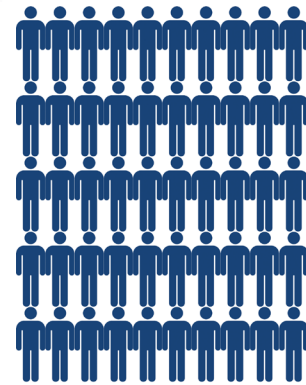
# 余韻 RESONATE



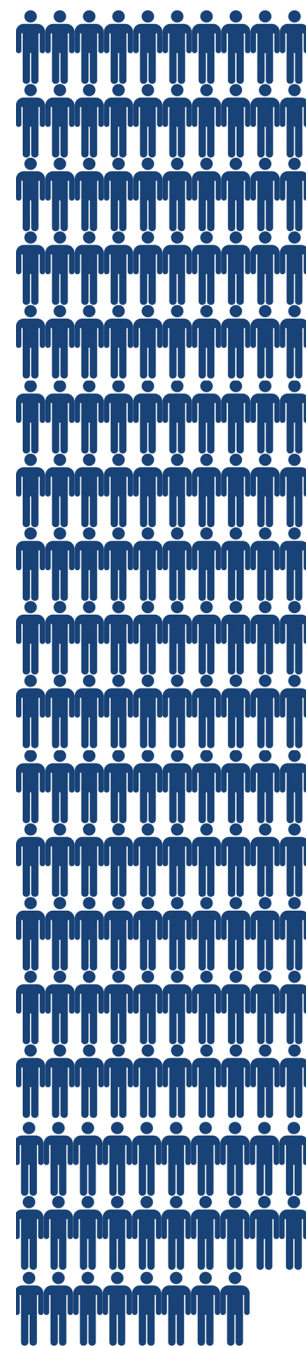
JACCC is grateful to have a passionate and dedicated volunteer base. In FY 2015-2016, 228 JACCC volunteers donated 1,477.5 hours of service across 19 days of programming.

“Before joining the Nikkei Student Union at UCLA, I had no idea that there was a difference between being Japanese and Japanese American; I’ve come to embrace my Japanese American culture over the years, and the one thing that never fails to refresh me is being in the community. In particular, **working with the Japanese American Cultural & Community Center has taught me a lot about what it means to be Japanese American, as well as what it means to make a community thrive:** I have helped bring color and music back to Little Tokyo; I have served generous community members as they take time to eat and be merry; I have brought generations of Nikkei—and those hailing from other ethnic communities—together in celebration; the list goes on, and there are many more experiences waiting. Beyond performing “community service,” the JACCC has really helped me become part of the community. I’ve learned so much at each and every event, and with each new thing I learn, I also find something new to love.”  
-Emiko Kranz, UCLA Nikkei Student Union

Emiko and other members of the UCLA Nikkei Student Union are among the hundreds of generous volunteers who donated their time to JACCC programs like Fiesta Matsuri, CrabFest, and LA Uke Expo.



In FY 2015-2016,  
**228 VOLUNTEERS**  
donated over  
**1,477**  
**HOURS OF SERVICE**



# 2015-2016 FINANCIALS

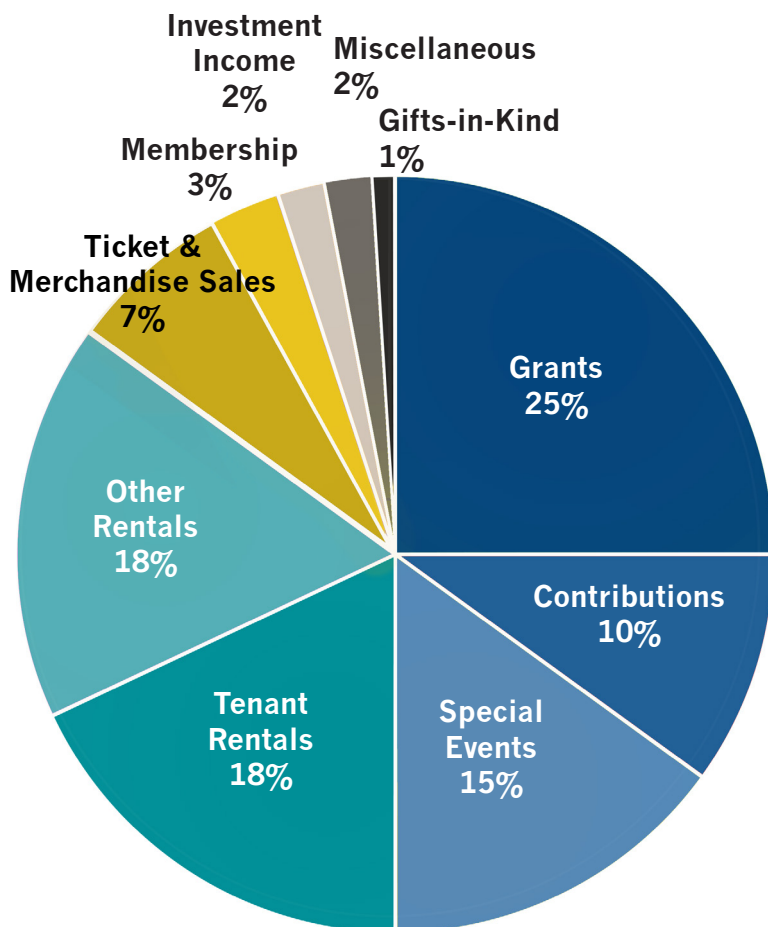
During fiscal year 2015-2016, JACCC continued to expand programming in Performing Arts, Visual & Cultural Arts, and Community Engagement providing a vibrant cultural resource for the Little Tokyo and Greater Los Angeles community. New programs included the first Culinary Arts event with Chef Nobu Matsuhisa, the Little Tokyo Concert Series, and exciting performances such as Peace on Your Wings, Burai, Nobuyuki Tsujii, and Keiko Matsui.

JACCC ended the year with a modest surplus of \$7,855. Contributed revenue increased \$123K overall, including significant gains in grants from foundations and individuals. Rentals increased \$71K with full occupancy in the Center Building and increased use in the Aratani Theater. Other income increased \$83K, including increases in ticket revenue from new programming.

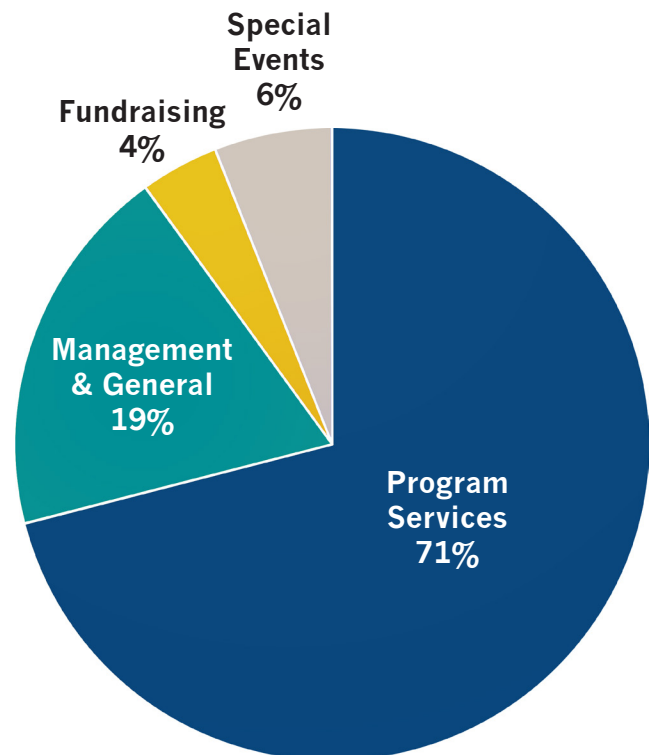
Overall expenses increased \$230K, an 8% increase from the prior year with fully staffed positions, increased programming, and new initiatives funded by restricted grants. Capital investments to the theater roof and Center Building HVAC were made. JACCC continues to move forward with exciting new programs while continuing to achieve stability for the present and long-term.

The financial results depicted in our Annual Report were derived from the JACCC audited June 30, 2016, consolidated financial statements, which contained an unqualified audit opinion. JACCC's complete audited financial statements can be obtained upon request at (213) 628-2725.

## REVENUE SUMMARY



## EXPENSE SUMMARY



# 2015-2016 FINANCIALS

For the fiscal year ending on June 30, 2016 and 2015 (in thousands)

	<u>2016</u>	<u>2015</u>
<b>Support and Revenue</b>		
Grant Revenue	775	364
Contributions, Dues & Special Events	846	1,134
Rentals	1,103	1,032
Gifts in Kind	24	58
Miscellaneous Income (1)	266	182
Investment Income	74	16
<b>Total Support and Revenue</b>	<b>3,088</b>	<b>2,787</b>
<b>Functional Expenses</b>		
Program Services	2,182	1,916
Management and General	595	538
Fundraising	134	174
Special Events	170	223
<b>Total Functional Expenses</b>	<b>3,080</b>	<b>2,850</b>
<b>Net Results: Support and Revenue over Functional Expenses</b>	<b>8</b>	<b>(63)</b>
<b>Asset, Liability &amp; Net Asset Summary</b>		
Cash & Cash Equivalents	707	845
Investments	1,425	1,250
Grants Receivable	493	236
Accounts Receivable	62	69
Prepaid Expenses	10	8
Property & Equipment (net of depreciation)	6,133	6,319
Art Collections	222	222
Other Assets	35	35
<b>Total Asset</b>	<b>9,088</b>	<b>8,984</b>
Accounts Payable and Accrued Expenses	134	190
Loans Payable	1,881	1,744
Deferred Revenue	51	30
Other Liabilities	17	22
<b>Total Net Assets</b>	<b>7,005</b>	<b>6,997</b>
<b>Total Liabilities and Net Assets</b>	<b>9,088</b>	<b>8,984</b>

# ありがとうございました

## THANK YOU TO OUR 2015-2016 SPONSORS & SUPPORTERS

### **\$100,000 and above**

Annenberg Foundation  
Aratani Foundation  
Bloomberg Foundation  
Durfee Foundation  
Surdna Foundation

### **\$50,000 to \$99,999**

Folick Family  
Kawaguchi-Kihara Memorial Foundation  
Terasaki Family Foundation

### **\$15,000 to \$49,999**

American Honda Motor Co., Inc.  
City of Los Angeles, Department of  
Cultural Affairs  
L.A. County Arts Commission  
The Henri & Tomoye Takahashi  
Charitable Foundation  
George, Ruri, Nathan & Lisa Sugimoto  
Toyota Motor Sales U.S.A., Inc.

### **\$5,000 to \$14,999**

California Community Foundation  
Ron Cheung  
Edison International  
Gerald Fukui  
J. Paul Getty Trust  
Google  
Ken & Jo Ann Hamamura  
John R. & Dora Haynes Foundation  
Hitachi  
Philip & Barbara Ito  
The JBA Foundation  
Aiko Kawaratani  
Nikki Kodama & Family  
Henry Ota  
Pasadena Art Alliance  
Rising Stars Youth Leadership  
Sandra Sakamoto & Nolan Maehara  
Tony Nobuyuki & Kori Hojo  
Shapiro Family Charitable Foundation  
So-Phis  
Larry & Mucci Taylor  
MUFG Union Bank N.A.  
Wells Fargo  
Kanako Yokoi-Chung

### **\$2,500 to \$4,999**

California Arts Council  
Cedars Sinai Medical Center  
Susan Chang  
Community Arts Resources  
Frank Ellsworth  
FIA Insurance Services, Inc.  
Tony Fujita  
The Heads Up Youth Foundation  
Thomas Iino  
Glenn & Michiko Inanaga  
Leslie Ito & Steven Wong  
The James Irvine Foundation  
Japanese American Korean War  
Memorial  
Los Angeles Japanese Auto Corp.  
Wayne Nagao  
Naritoku Charitable Foundation  
Alan Nishio  
Ronald & Fujie Ohata  
Shin Enkan Foundation  
Yasumasa Tanano  
UCLA Terasaki Center for  
Japanese Studies

### **\$1,000 to \$2,499**

Calvin Abe  
Douglas Aihara  
Dr. Akiko Agishi  
Linda Aratani  
Bank of America United Way  
Beikoku Shodo Kenkyu Kai  
Kathryn Doi Todd  
Ronald Doizaki  
Friends of the Little Tokyo  
Library  
Ruby Hori  
Tomio Ito  
J. Morita USA  
Don & Susan Kang Charitable  
Foundation  
Sheldon & Naomi Kawahara  
MA and Josephine Grisham  
Foundation  
Tim & Marion Manaka  
The Mary Kiyoko Sakioka Trust  
Nancy Matsui  
Jean Miao  
Johnny Mori  
Mutual Trading Co., Inc.  
Jack & Kaya Naito  
Peter O'Malley  
Dolly Oishi  
Dr. Keiichiro Omori  
Rafu Shimpo Foundation

### **\$1,000 to \$2,499 (continued)**

Anne & Jack Smith  
George & Brad Takei  
Susan Tamaki  
Tokio Marine Management  
Sandy Toshiyuki  
Joshua Warner  
David & Helen Yamahata  
Masao Yamashiro  
Steven Yamashita  
Yoshimoto Entertainment  
U.S.A., Inc.

### **\$500 to \$999**

Sakaye Aratani  
Constellation Brands  
Mimi Do  
Lori Gage  
Allyson Hayashi  
Steve & Janine Hunt  
Chris Inouye  
Japanese Women's Society of  
Southern California  
Rose Jong  
Atsuko Kanai  
Walter Andrew Kowalchuk  
Frances Kuramoto  
Richard McDanel  
Ken Minami  
Ann Miyagi  
David Ono  
Jan C. Perry  
Wayne & Pauline Shimizu  
Lisa Sugino  
Norito Takamoto  
Ted Tokio Tanaka  
Jonathan & Lynne Weaver

### **Significant In-Kind Donations**

American Airlines  
Bose  
Hiji Bros.

### **In Memory of:**

Kiyoshi Kawaratani  
Dr. Paul Terasaki

### **In Honor of:**

Dr. & Mrs. Keith Terasaki

We are deeply grateful to all donors. We regret due to limited space we cannot list everyone. If your name has been displayed incorrectly, or inadvertently excluded, please accept our deepest apologies.



# ありがとうございました

## THANK YOU TO OUR

## 2016 ANNIVERSARY CELEBRATION SPONSORS & SUPPORTERS

### Major Sponsors

American Honda Motor Co., Inc.  
Folick Family  
Terasaki Family Foundation

### Gold Sponsors

Aratani Foundation  
Kawaguchi-Kihara Memorial Foundation  
MUFG Union Bank N.A.  
George, Ruri, Nathan & Lisa Sugimoto

### Silver Sponsors

Doizaki and Sons  
First Republic Bank  
Fukui Mortuary, Inc.  
JAPAN HOUSE  
Nikki Kodama & Family  
Mitsubishi Corporation (Americas)  
Henry Ota  
Pacific Commerce Bank/Thomas Iino  
Sandy Sakamoto & Nolan Maehara  
SoCalGas

### Bronze Sponsors

American Honda Motor Co., Inc. (2)  
FIA Insurance Services Inc.  
Glenn & Michiko Inanaga  
Gonsaku & Mine Ito Families  
Ito/Wong Family  
IW Group Inc.  
Kawaguchi-Kihara Memorial Foundation  
Kinecta Federal Credit Union  
Hon. Don Knabe  
Nobuyuki Family  
Hon. & Mrs. Ronald & Fujie Ohata  
Panda Express  
Toyota Motor Sales, U.S.A., Inc.

### Gold Patrons

Alan & Yvonne Nishio  
LA Metro

### Community Sponsors

Asia America Symphony Association  
Fujima Kansuma  
Gift of Compassion  
Go For Broke National Education Center  
Higashi Honganji Buddhist Temple  
Japanese American Korean War Veterans & Japanese American Vietnam Veterans Memorial Committee  
Japanese American National Museum  
Little Tokyo Historical Society  
Little Tokyo Rotary Club & Little Tokyo Business Association  
Little Tokyo Service Center  
Orange County Buddhist Church  
Orange County Buddhist Church Adult Buddhist Association  
Pacific Asian Consortium in Employment  
Project Kokoro  
Rising Stars Youth Leadership Program  
So-Phis  
Tanaka Farms  
Carol Tanita, Family & Friends (3)  
Urasenke Tankokai LAA  
Venice Pioneer Project/Venice JCC

### Event Sake Sponsor

Mutual Trading Co., Inc.  
Takara Sake USA

### Significant in-kind support provided by

American Airlines  
Bose

### Additional Donations \$500 and Above

Howard & Lynn Arimoto  
Maureen Costello / United Pacific Pet, LLC  
Deloitte & Touche  
Matt Gruver / Jack Clancy Associates  
Ken & JoAnn Hamamura  
Terry S. Hara  
Rudolph Hill  
David & Kathy Ikeda  
Glen Kazahaya  
Kintetsu Enterprises Company of America  
Mutual Trading Co., Inc.  
Jeffrey Neu  
Gordon Sasaki  
Bill Seki  
Lisa Sugimoto  
Sushi Gen-Aomori Nebutabayashi Hozonkai  
Victoria Tani  
George Tanaka  
Phyllis Uyemura  
Yuko Uyesugi  
Paul Yamaguchi

**Officers**

George Tanaka, Union Bank  
*Chair of the Board of Directors*  
 Nancy Matsui, American Airlines  
*Vice-Chair, External*  
 Glenn Inanaga, Panda Restaurant Group, Inc.  
*Vice-Chair, Internal*  
 Tony Nobuyuki, Fairway Real Estate  
*Treasurer*  
 Gerald Fukui, Fukui Mortuary, Inc.  
*Secretary*  
 Henry Ota, Esq.  
*Immediate Past Chair*

**Members**

Jeff Folick, Bravo Health (retired)  
 Toshio Terry Handa, Japanese Chamber of Commerce of Southern California  
 Bette Hiramatsu, Hiramatsu and Associates  
 Thomas Iino, Pacific Commerce Bank  
 Gary Kawaguchi, Upper Crust Enterprises  
 Nikki Kodama, Northrop Grumman Corporation  
 Tim Manaka, Jr., FIA Insurance Services, Inc.  
 Jean Miao, JTM Global Philanthropy Advisors  
 Daren Mooko, Pomona College, Claremont  
 Johnny Mori, Kinnara Taiko/Gagaku  
 Alan Nishio, California State University, Long Beach (retired)  
 Dolly Oishi, Japan Airlines  
 Jan Perry, City of Los Angeles  
 Sandra Sakamoto, Esq., Lim, Ruger & Kim, LLC  
 Diane Tanaka Suzuki, HealthCare Partners  
 Craig Tomiyoshi, IW Group Inc.  
 David Yamahata, Los Angeles Fire Department (retired)

**Honorary Chairs**

Sakaye Aratani  
 Maria Hodgson  
 Supervisor Don Knabe  
 Congresswoman Lucille Roybal-Allard

**Co-Chairs**

Henry Ota, Esq.  
 Yoshihiro Sano, Pacific Alliance Group

**Members**

Ronald Doizaki, Doizaki & Sons  
 Dr. Frank L. Ellsworth  
 Erwin Furukawa  
 Terry Hara, Los Angeles Police Department (retired)  
 Chris Inouye, Marsh Risk & Insurance Services  
 Tomio Ito, Ito Farms  
 Yuji Iwanaga, Pillsbury Winthrop Shaw Pittman, LLP  
 Noritoshi Kanai, Mutual Trading Co., Inc.  
 Masami Kitano, M.D.  
 Kelvin Lee, FIG Partners  
 David Lin, IW Group  
 Akemi Miyake, Sawada Miyake Farms  
 Ernest Nagamatsu, D.D.S.  
 Jack Naito  
 Keiichiro Omori, M.D.  
 Etsuko Price  
 Anne Shen Smith  
 Hiroko Tatebe, GOLD (Global Organization for Leadership and Diversity)  
 William A. Witte, Related  
 Stan Yoshihara, R7 Real Estate Inc.

## 2015-2016 JACCC STAFF

Leslie A. Ito  
*President & CEO*

**Administration**

Michelle Moreno  
*Director of Administration & Operations*  
 Helen H. Ota  
*Director of Development & Marketing*  
 Eiko Fujino  
*Receptionist*  
 Terry Hashimoto  
*Box Office & Membership Coordinator*  
 Kisa Ito  
*Executive Assistant*  
 Marlene Lee  
*Office Manager*

**Programs**

Alison De La Cruz  
*Director of Performing Arts & Community Engagement*  
 Hirokazu Kosaka  
*Master Artist in Residence*

Chester Ikei  
*Gallery Assistant*  
 Wakana Kimura  
*Cultural Arts Manager*  
 Kent Marume  
*Community Engagement Coordinator*  
 Carol Onaga  
*General Manager, Aratani Theatre*  
 Katherine Nixon  
*Production Manager*  
 Rani de Leon  
*Performing Arts Consultant*

**Operations**

Arthur Granados  
*Chief Engineer*  
 Javier Ixta  
 Arturo Carballo  
 Pedro Gutierrez  
 Aric Nakamoto  
 Maria Magdalena Rodriguez  
 Francisco Soc Sut  
*Operations Assistants*